

**APRT Antibody (C-term)**  
**Affinity Purified Rabbit Polyclonal Antibody (Pab)**  
**Catalog # AP2893b**

**Specification**

---

**APRT Antibody (C-term) - Product Information**

Application	WB, IHC-P,E
Primary Accession	<a href="#">P07741</a>
Reactivity	Human, Rat
Host	Rabbit
Clonality	Polyclonal
Isotype	Rabbit IgG
Antigen Region	143-170

**APRT Antibody (C-term) - Additional Information**

**Gene ID** 353

**Other Names**

Adenine phosphoribosyltransferase, APRT, APRT

**Target/Specificity**

This APRT antibody is generated from rabbits immunized with a KLH conjugated synthetic peptide between 143-170 amino acids from the C-terminal region of human APRT.

**Dilution**

WB~~1:1000

IHC-P~~1:50~100

E~~Use at an assay dependent concentration.

**Format**

Purified polyclonal antibody supplied in PBS with 0.09% (W/V) sodium azide. This antibody is purified through a protein A column, followed by peptide affinity purification.

**Storage**

Maintain refrigerated at 2-8°C for up to 2 weeks. For long term storage store at -20°C in small aliquots to prevent freeze-thaw cycles.

**Precautions**

APRT Antibody (C-term) is for research use only and not for use in diagnostic or therapeutic procedures.

**APRT Antibody (C-term) - Protein Information**

**Name** APRT ([HGNC:626](#))

**Function** Catalyzes a salvage reaction resulting in the formation of AMP, that is energetically less costly than de novo synthesis.

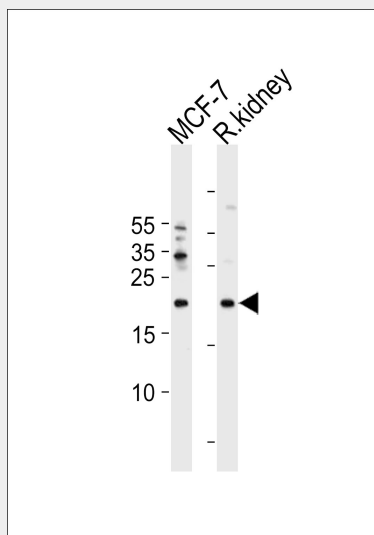
**Cellular Location**

Cytoplasm.

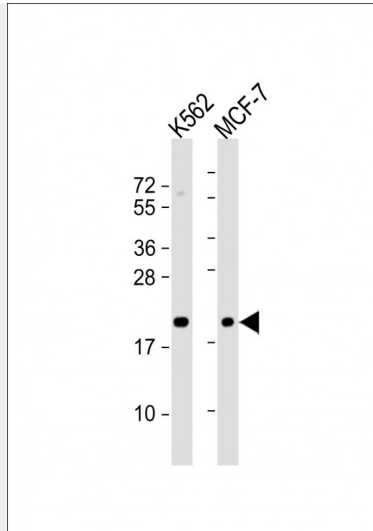
**APRT Antibody (C-term) - Protocols**

Provided below are standard protocols that you may find useful for product applications.

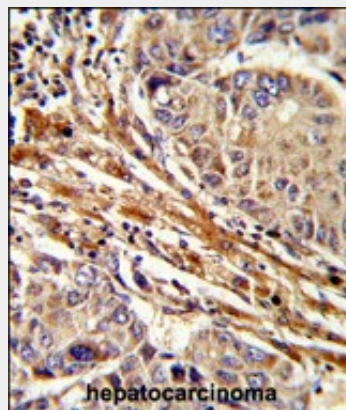
- [Western Blot](#)
- [Blocking Peptides](#)
- [Dot Blot](#)
- [Immunohistochemistry](#)
- [Immunofluorescence](#)
- [Immunoprecipitation](#)
- [Flow Cytometry](#)
- [Cell Culture](#)

**APRT Antibody (C-term) - Images**

APRT Antibody (C-term) (Cat. #AP2893b) western blot analysis in MCF-7 cell line and rat kidney tissue lysates (35ug/lane). This demonstrates the APRT antibody detected the APRT protein (arrow).



All lanes : Anti-APRT Antibody (C-term) at 1:1000 dilution Lane 1: K562 whole cell lysate Lane 2: MCF-7 whole cell lysate Lysates/proteins at 20 µg per lane. Secondary Goat Anti-Rabbit IgG, (H+L), Peroxidase conjugated at 1/10000 dilution. Predicted band size : 20 kDa Blocking/Dilution buffer: 5% NFDm/TBST.



Formalin-fixed and paraffin-embedded human hepatocarcinoma reacted with APRT Antibody (C-term), which was peroxidase-conjugated to the secondary antibody, followed by DAB staining. This data demonstrates the use of this antibody for immunohistochemistry; clinical relevance has not been evaluated.

### APRT Antibody (C-term) - Background

A conserved feature of APRT is the distribution of CpG dinucleotides. This enzyme catalyzes the formation of AMP and inorganic pyrophosphate from adenine and 5-phosphoribosyl-1-pyrophosphate (PRPP). It also produces adenine as a by-product of the polyamine biosynthesis pathway. A homozygous deficiency in this enzyme causes 2,8-dihydroxyadenine urolithiasis.

### APRT Antibody (C-term) - References

Silva,C.H., et. al.,J. Biomol. Struct. Dyn. 25 (6), 589-597 (2008)  
Di Pietro,V., et. al., Clin. Biochem. 40 (1-2), 73-80 (2007)

### APRT Antibody (C-term) - Citations

- [Adenine phosphoribosyltransferase \(APRT\) deficiency: identification of a novel nonsense mutation.](#)

